

BROOKLINE
NEW DRISCOLL SCHOOL

School Building Advisory Committee

April 1, 2021



Value Management Focus

Use pricing information gathered from subcontractor meetings to target savings in:

- Architecture
- Structure
- HVAC
- Electrical
- Landscape

Value Management Focus

Architecture

- Simplify interior finishes without sacrificing acoustical performance. Reduce wood trim.
- Simplify geometry without affecting room sizes
- Remove residual exterior sunshade / trellis
- Remove south canopy
- Simplify exterior window system
- Simplify exterior details and materials without affecting performance

Value Management Focus

Structure

- Simplify exterior perimeter details
- Lower floor to floor heights by 8" at Second, Third, and Fourth floors.
- Simplify concrete pours where possible.

Value Management Focus

HVAC

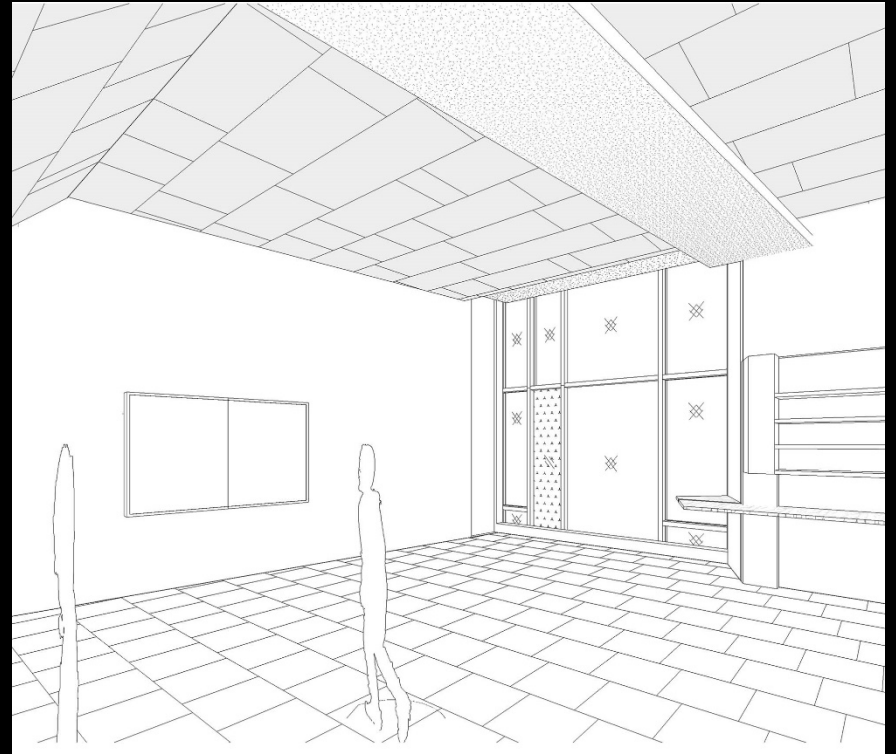
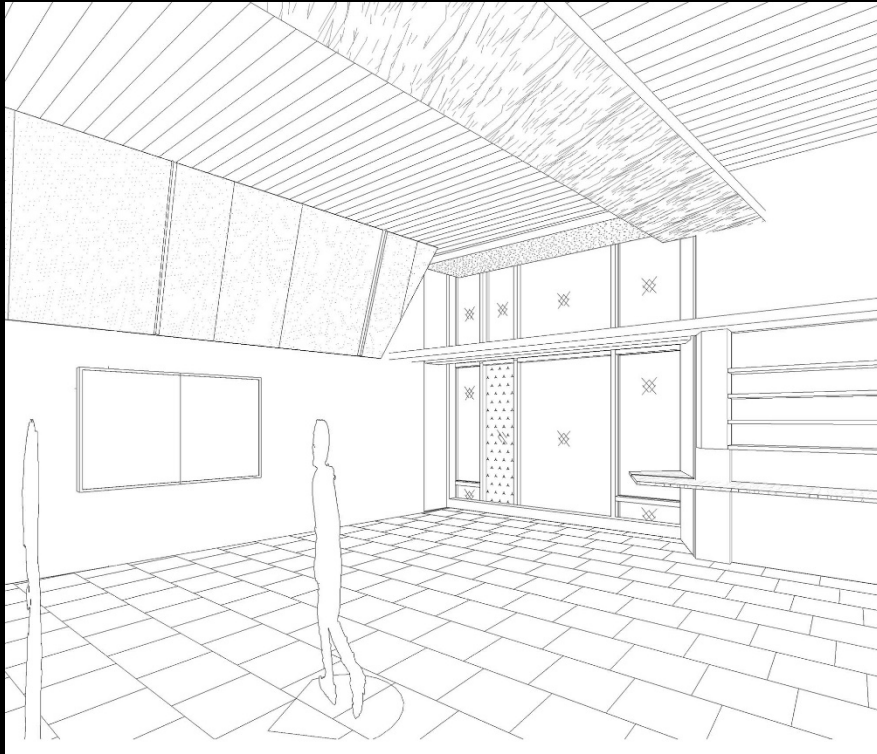
- Bring scope in line with Ridley, without affecting comfort or air changes per hour
- Simplify metering and controls
- Substitute radiant ceiling panels for radiant light shelves

Value Management Focus

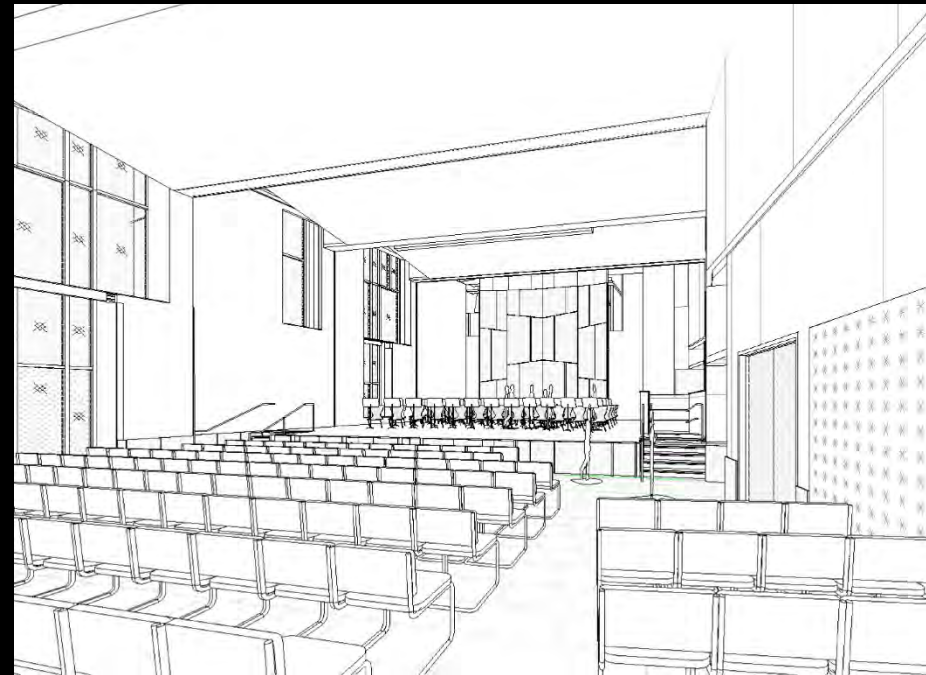
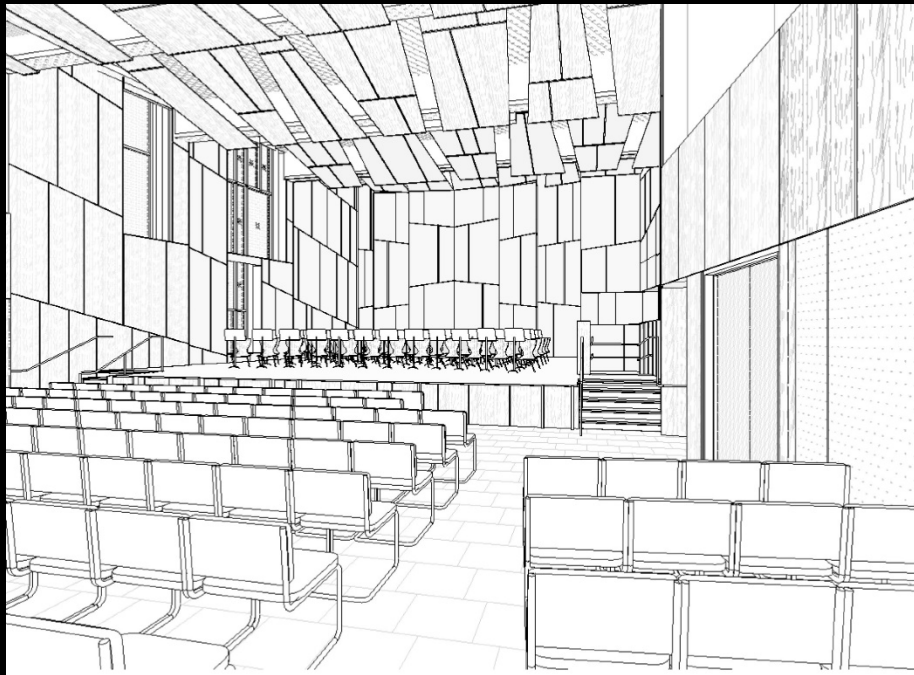
Electrical

- Bring scope in line with Ridley
- Simplify metering and controls
- Simplify Audio Visual scope

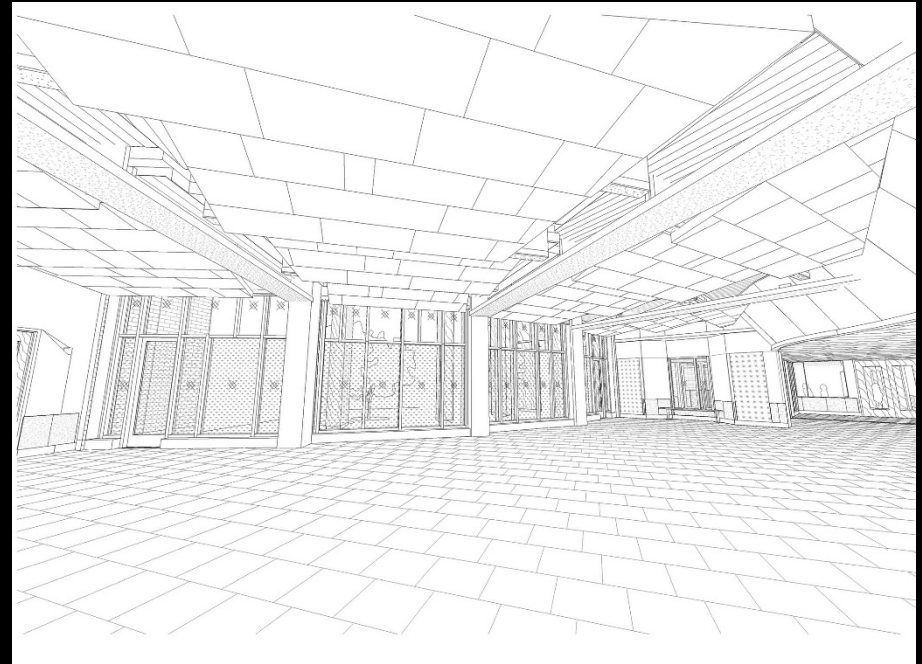
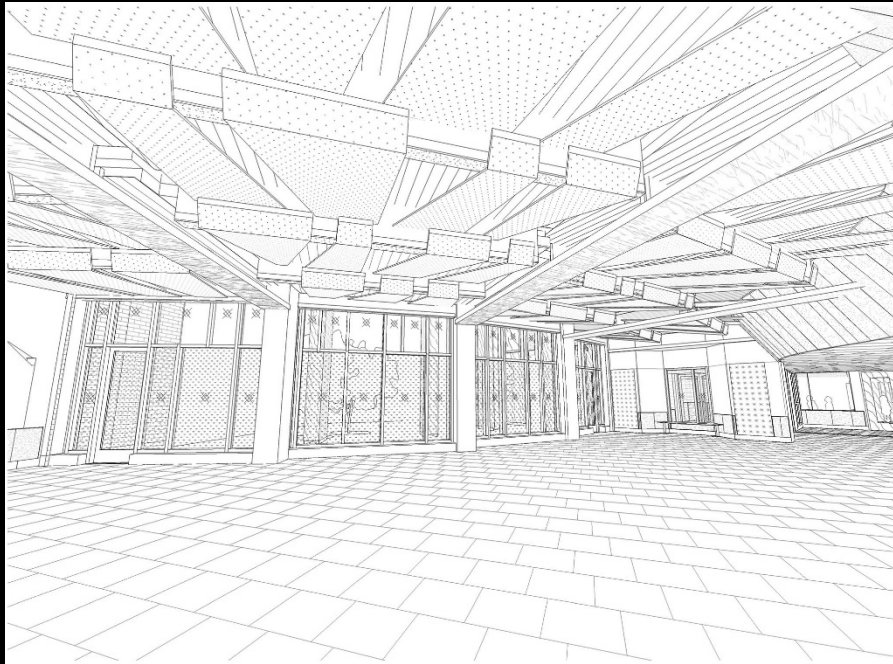
CLASSROOM



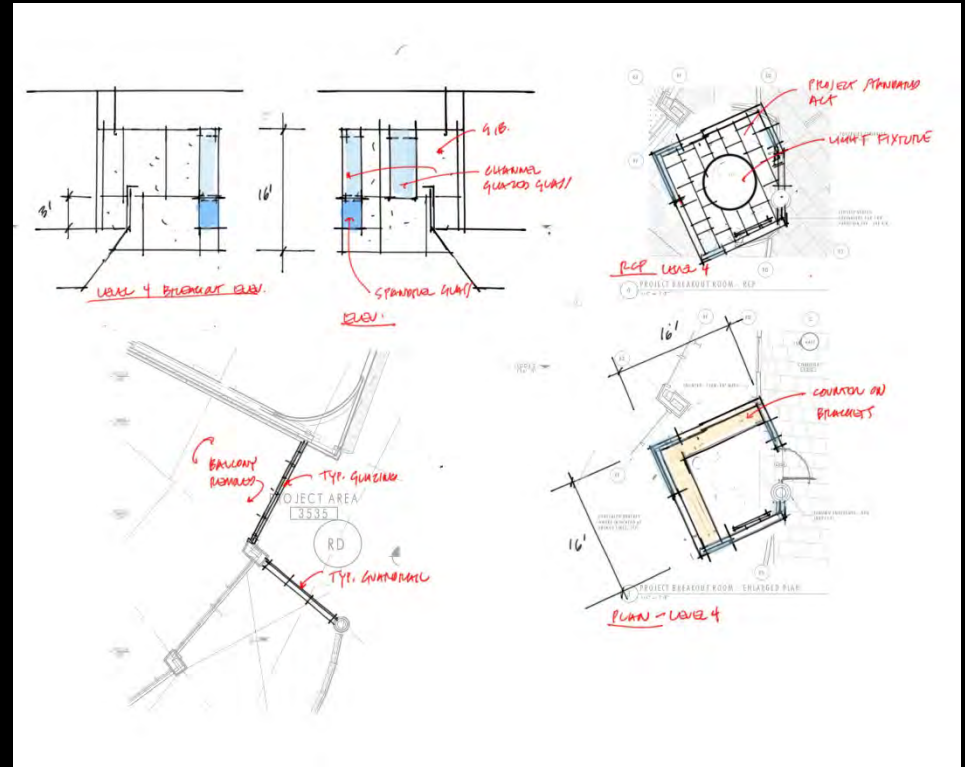
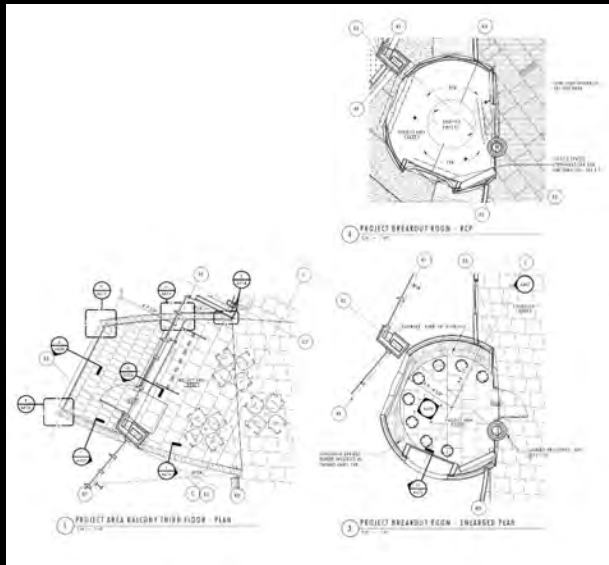
MULTIPURPOSE ROOM



CAFETERIA



PROJECT AREA



SOUTH ELEVATION & CANOPY



GLAZING SYSTEM



CORRUGATED PANEL



Site Plan

Current Site Design as reviewed and approved at the 6/8//20 Community Landscape Design Meeting

	School Building Footprint	Car / Truck Zone	Usable Open Space	Unoccupied Space	Total
Existing Site	39,500 SF	23,800 SF	80,700 SF	29,000 SF	173,000 SF
Proposed Design	38,200 SF	14,200 SF	97,800 SF	22,800 SF	173,000 SF



Value Management Focus

Landscape

- Simplify materials such as railings and site furniture without affecting playgrounds or longevity
- Reduce size, quantity, and type of boulders
- Simplify concrete finishes
- Reduce density of shrub / perennial plantings
- Remove pergola structure
- Eliminate salvaging of mural